

Landgrave[®]

EST. 1928

TODAY'S



Being present in the furniture market for as long as 90 years teaches you the importance of adaptation.

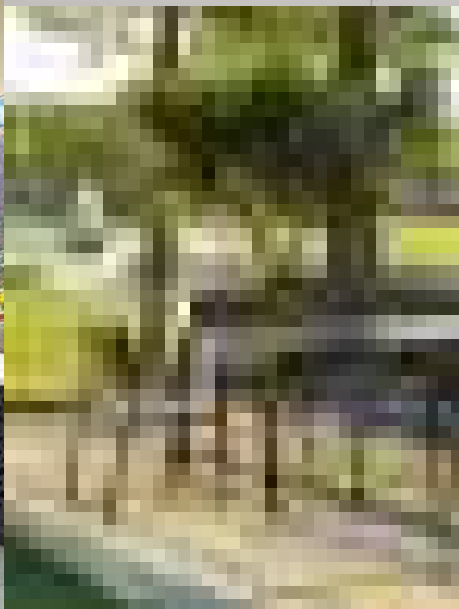
We combine techniques commonly used on classical furniture and adapt them to contemporary designs that create eclectic and unique pieces.

ARTY
07



BALEARES
08

BARCELONA
23



BILBAO
25

BUNGALOW
27



CENTURION
39

CUBO
55



HOLLAND
58

IBIZA
68

LOVE
70

MANHATTAN
72





MARRAKESH
74

OOH LA LA !!!
76

PA L M A
78

PUERTO BANUS
87



PLAY
91

RATTAN
93



SUNSET
99



RUE LA LA
95

PUERTO BANJUS
97

SYT
79



SMILE
102



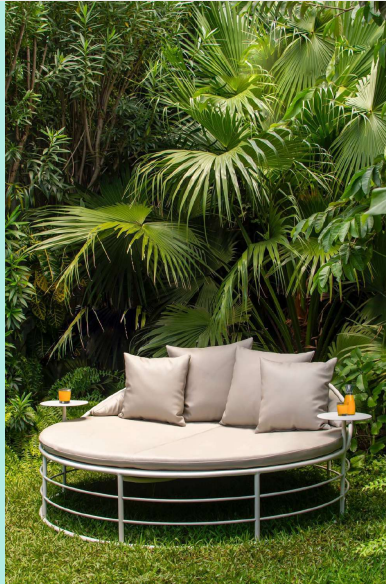
SWELL
103



TUXEDO
111

TWIST
117

YACHT
119



ARTY

A lifestyle that only those who travel the world can
understand how useful a stool can be



BALEARES

The woodlike casted components that conform the majority of this collection is a unique feature achieved by sand-casting. This is a good example of how ancient techniques can be properly incorporated in a modern collection.





334206C
Ottoman



330206SCC
Sectional armless club

BALEARES



330206SRC
Sectional right arm club front



330206SRC
Sectional right arm club back



330306C
Lounge chair



BALEARES



32806WG
Rectangular 42" x 84" dining table- wood grain top



32606WG
Side table- wood grain top



32706
WG coffee table- wood grain top







31206C
Arm chair cushion

BALEARES



31206S Sling
Arm chair back



31206S Sling
Arm chair front











BARCELONA

A mix between Romanesque, Gothic, modernist
and contemporary architecture



BILBAO

Simple enough.



BUNGALOW

Casual comfort with simple lines and curves.







BUNGALOW



BUN-04C lounge chair



BUN-09C chaise lounge







BUNGALOW



BUN-01C dining arm chair



52100SL 48" round common slat table





CENTURION

Eclectic and elegant. Centurion has proved year after year to be one of the most versatile collections. It nurtures every space with an unmistakable refinement.































CUBO

Ergonomic Lines that perfectly meet.





HOLLAND

Simple and elegant straight lines coexisting with light extrusions make of this collection a convenient and versatile option.



HOLLAND



41161S
Sling arm chair



43161
Arm chair

















IBIZA

Simple and elegant straight lines coexisting with light extrusions make of this collection a convenient and versatile option.



LOVE

True love stories never have endings just like the woven
of the rope on the pink aluminum frame representing the
female and most pure love.



MANHATTAN

Glamour that never ends.



MARRAKESH

In Morocco, it's possible to see the Atlantic and the
Mediterranean at the same
time.

That's why we created a table with clean lines and
a circular top that allows you to enjoy the horizon



OOH LA LA !!!

Just like the first time i was lucky to see paris from a helicopter
my first expression was ooh la la a very french expression and by
just contemplating the city from the air immediately came to me
the idea of a lamp with the shape of the city which if you
contemplate from the air is like a net



PALMA

One of the latest processes we have added to our production line is weaving. In this line we wanted to take full advantage of this beautiful craftsmanship. Completely hand woven over an extruded aluminum frame, this tropical collection is the best way to enjoy the outdoors.

PALMA



83000SCRW
Sectional corner woven



83000 SRW
Sectional right arm woven



83000 SCW
Sectional armless woven





PALMA





81100 W
Dining chair woven



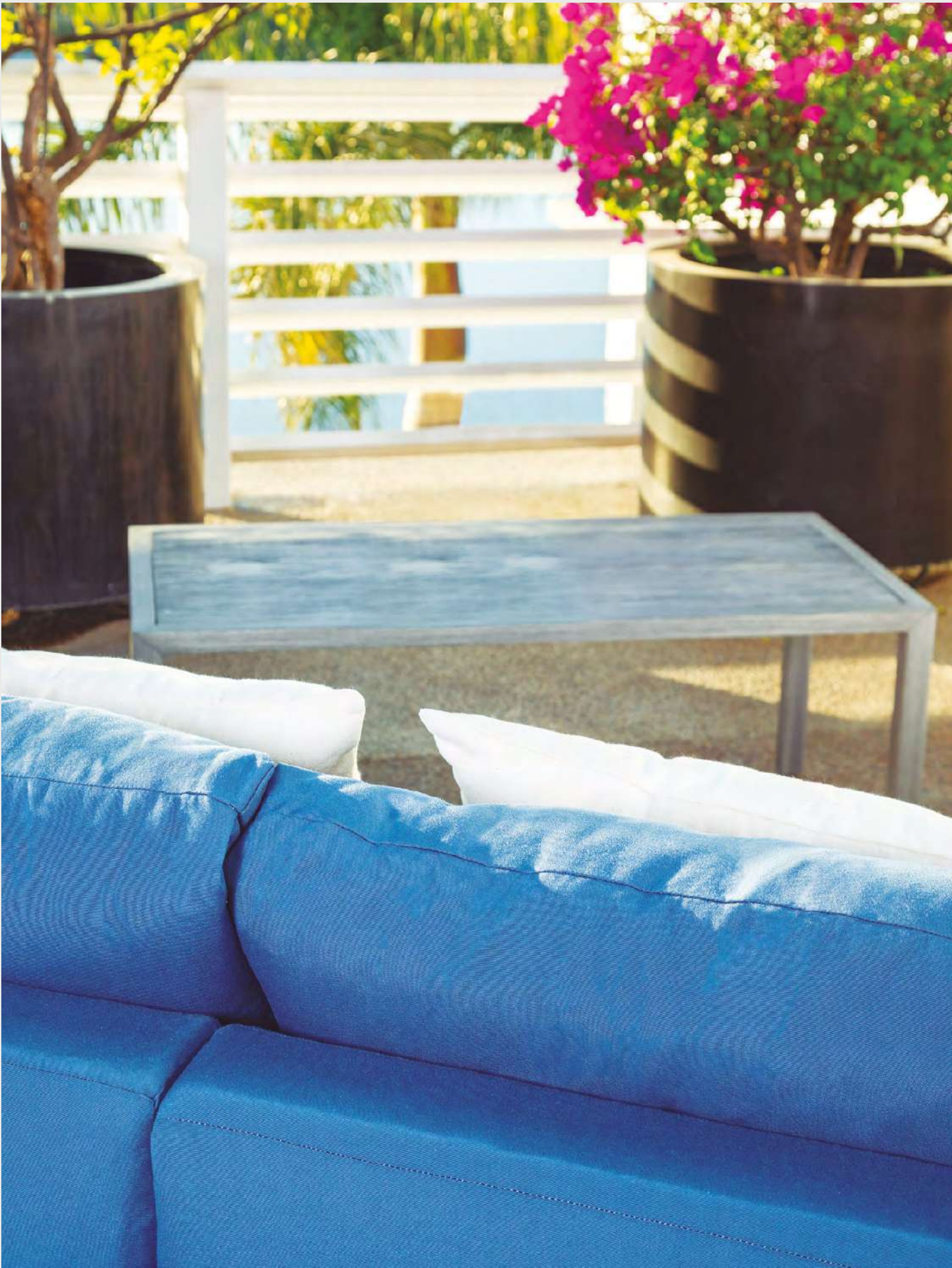


PUERTO BANUS

One of our early distinctive features was bringing indoor experiences outside through the adaptation of styles such as Louis XV, Louis XIII, Country French, Tuscan, ETC.

With this line, we want to bring the comfort of fully upholstered indoor living rooms to the outdoors. A 100% aluminum frame along with fabrics and fillings engineered to withstand outdoor conditions will give you the best of both worlds outside.







83000SRPB
Sectional right club

PLAY

LIFE IS A DREAM

The main idea is to not let people forget the art of play and just enjoy without the everyday stress, when we combine work and play we get more creative and we want to share this to every person in the planet.

Designed in organic shapes available in 2 sizes L and XL to share with your love ones.



RATTAN

We name it Rattan because it means wicker in English and it sounds like Roatán, an island in the Caribbean that we particularly love. We use a touch of synthetic wicker with a rougher aluminum frame. weaved wicker one of the oldest trades in the world. it stirs a memory and makes you feel at home.



RUE LA LA

Rue La LA the inspiration is born from the need to have a sophisticated table to simply contemplate the streets of Paris



SIT

With comfort in mind, the idea of adding an integrated canopy to the chair was born here so that you can always be seated, whether reading a book, talking with family or friends without the sun deprived you.

Ideal for covering the skin from direct UV rays.

The collection consists of the chair with canopy, ottoman and side table perfectly integrated into the collection in aluminum, fabric and synthetic weaved wicker



SUNSET

The shape of the chair, is inspired by the courtship dance of male peacock - mayura in the Hindu language- who stretch out their wings to show off their beauty to the female. Sunset Dining Arm Chair is part of Sunset Collection, a range of chair and Table conceived by the designer and produced by Italian craft upholsters using the fabric that is used to upholster yacht's. The designs are made out of aluminum and yacht fabric . Hand - made, they are human in their perfections and flaw.



BLISS



That Inspire

SMILE

A SMILE CAN SAVE A LIFE

That's why we make sure the back and seat of this collection are the shape of a smile.

The clean lines of the table reflect simplicity of life.



SWELL

An upholstered collection designed to withstand outdoor weather conditions. Superb comfort and gallant design.













TUXEDO

Distinguished curves in harmony with upholstered components
integrate comfort and design.











TWIST

An aesthetic that crosses the line; rational and logical interpretation is replaced by instinctive perception. A conceptual reinvention process, a twisted thick rope and aluminum frame that would be impossible to produce if not for the talented hands of our craftsmen.



YACHT

The tubular aluminum frame of Yacht becomes the starting point which the designer uses for a creative makeover.

The frame inspired by the railing of a yacht born through the trips of Hector and Zara Landgrave through the beautiful costa del sol in Spain the journey always begin leaving the port of Malaga, the seats assume different personalities according to the material used.

Yacht fabric on the cushions.

The frame is made of tubular aluminum and powdercoated:
matt white, blue black, brown, grey, green, graphite..., you choose.

The cushions are made of polyester fiber and the mattress of the day bed is made of polyurethane foam; suitable for outdoor use.

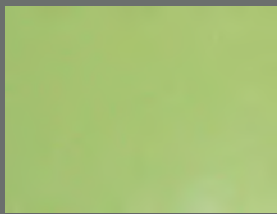


FINISHES

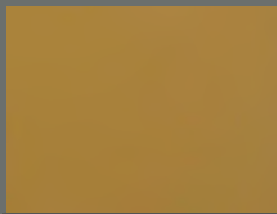
HIGH GLOSS

SOLID

TEXTURE



JK019S Meadow



JD111S Beige smooth
semi matt



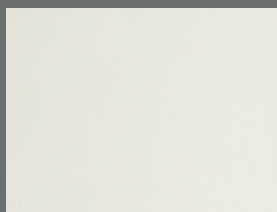
PZ202S Clear bronze



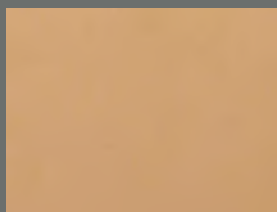
Dark oak



Walnut



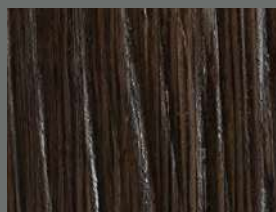
Clouth white



PD202S Beige smooth matt



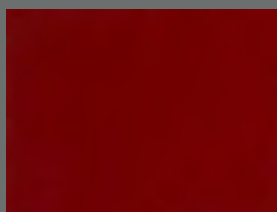
TCI 8310-8886 Mahogany
tint



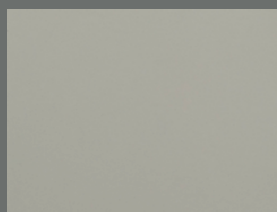
Mahogany



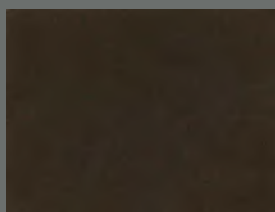
Pukté



LA0152MR Wine



ML207S Smooth grey



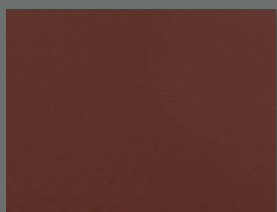
PX501S Bronze Smooth
matt



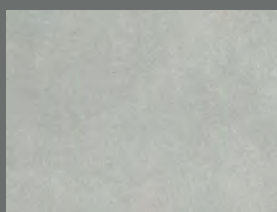
Red Encino



Macassar



Cafe 049/66080



JZ00S Clear matt



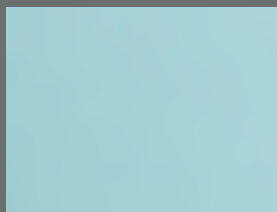
Graphite



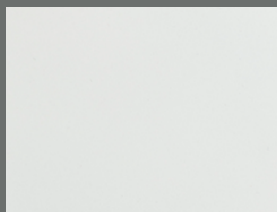
Maple



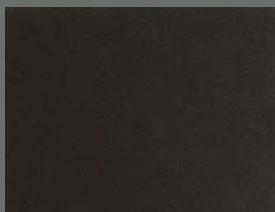
Aged Teak



9710-50783 Sky blue



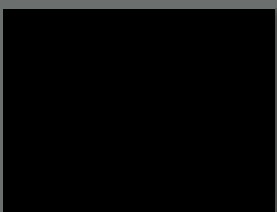
Matt white



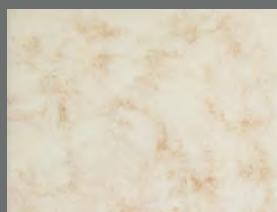
Textured Black



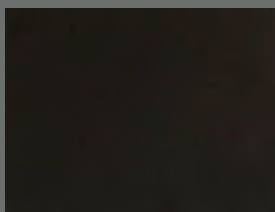
Capomo



Black Jet

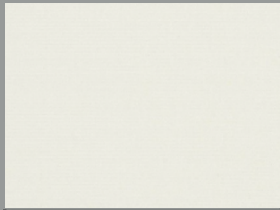


Marble

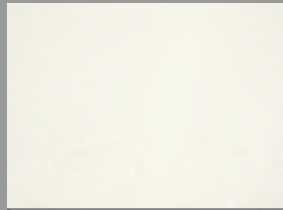


Solid black

FABRICS



54" Canvas natural
60 Yd rolls



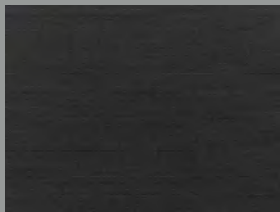
Canvas white
60 yd rolls



54" Sailcloth
Sailor *45 yd rolls*



54" Cast
Slate *60 yd rolls*



54" Canvas
Black *60 yd rolls*



54" Canvas antique beige
60 yd rolls

WOVEN WICKER



Single braided
Honey Wicker



Double braided
Honey Wicker



Single braided
Shimmer Electra



Double braided
Shimmer Electra

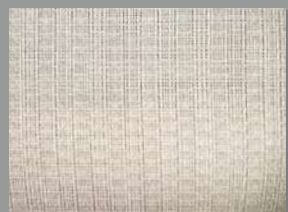


Single braided
Ivory Wash

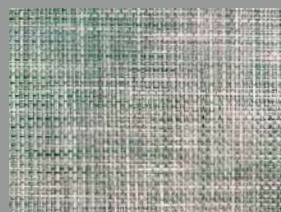


Double braided
Ivory Wash

SLINGS



SL01 Bone



SL02 Grass



SL03 Beige



SL04 Bloom

CAST & INSERT TABLE TOPS



Insert marble top



Insert aged marble top



Insert cement top



Insert wood grain top



Insert wood grain slat top



Cast Tuxedo top



Cast marble top



Cast Swell top



Cast cement top



Insert Madrid top

WARRANTY

GENERAL

This Warranty is given to the original purchaser. Landgrave warrants the following Landgrave products and parts against manufacturing defects only when put to "ordinary residential use" from the factory ship date (available from the authorized dealer) until the warranty expiration date and subject to the limitations and exclusions stated below.

- This Warranty is to the original purchaser only.
- This Warranty is not transferrable.
- This Warranty does not cover normal wear and tear or damage resulting from negligence; abuse; commercial or contract use; conditions resulting from any use for which the product was not designed; tampering or alteration; accidents; pets; after-market protective treatments; staining or discoloration caused by non-manufacturer approved cleaning products or techniques; surface spills; misuse; fading from direct sunlight (except as provided in the warranty for outdoor furniture); body oils; tanning lotions or other chemicals; and chipping, denting, scratching, and damages that occur after shipping the merchandise due to wrong handling of the product.
- This Warranty does not cover floor or display samples, or products designated "as is" at the time of purchase.
- This Warranty does not cover damage to our outdoor products caused by acts of nature including, but not limited to, water freeze, fire, and wind or any extraordinary weather condition or phenomenon.
- This Warranty does not cover finish failure caused due to exposure to indoor pool, salt water pool, or seaside use of our outdoor products, generated by neglecting to perform reasonable and necessary care as indicated on our website.
- This Warranty does not cover any use of interior fabric on our outdoor products, or natural fading of metal products, scratching or chipping of paint and Gloss finishes.
- Customer own material ("COM") are excluded from this Warranty. • Landgrave's obligations under this Warranty are limited to repair or replace the product(s) or part(s) covered by this Warranty that are, in Landgrave's sole discretion, found to be manufacturing defects or defective materials upon examination by an authorized Landgrave representative. Refunds are not available.
- This Warranty does not cover non-compliance with applicable laws, regulations, codes, certifications and manufacturing standards if the product(s) or part(s) are misused, improperly installed, or modified in any respect after shipment from Landgrave.

Components such as chair feet are subject to wear and tear and are not considered part of the frame.

If a component part (glide, bolt, bushing, plate, bolt, wheel, etc.) fails due to manufacturing defect within one (1) year from the date of purchase, we will at our option, repair or replace the part in the original color and style, if available, or in a similar color and style if the original has been discontinued.

Note: The Company or its suppliers may discontinue any component part such as fabric, paint, etc. at any time.

Failure caused by unreasonable or abusive use, fire, freight damage, accidental damage repair or modifications by consumer, are excluded from this warranty.

Failure of furniture frames or welds arising from unreasonable, abusive or improper use is not covered by this warranty.

• Failure of furniture or parts caused by neglect of reasonable and necessary care and maintenance are excluded from this warranty.

All sales are made FOB factory. Title to the merchandise passes to the freight carrier and to the purchaser at time of shipment.

Cost generated of field repairs NOT authorized in writing by Landgrave are not covered by this warranty.

Purchaser will be responsible for return freight after one year from date of purchase.

FINISHES

Finishes that are properly maintained are guaranteed for three years, for residential use and one year for commercial use.

Frame Finishes: To maintain, wash with a mild natural soap and warm water solution. Prepare a solution of 1/4 cup of mild soap per gallon of water. Use a soft sponge or cleaning rag to clean aluminum frames. Rinse with clean water. It is recommended that furniture inland away from salt air environments be cleaned quarterly or as needed. Furniture near coastal areas, *salt spray must be cleaned from frames on a regular basis (Bi-monthly) or finish may oxidize, discolor and/or blister. Salt spray build up over time without proper cleaning will deteriorate the frame's finish. Finish failure due to improper cleaning will void Landgrave's warranty. CAUTION!!! When using floor cleaning chemicals such as chlorine or muriatic acid, furniture MUST be removed from area. Floors MUST be thoroughly rinsed with clean water prior to replacing furniture. Residue from cleaning chemicals may deteriorate the frame's finish.

See "Care and Maintenance" on our website www.landgrave.com.mx

For verification purposes, it is required that a maintenance sheet be maintained. This sheet must be kept to insure proper cleaning schedules. A cleaning log sheet must have date of cleaning and printed name and signature of person who performed the cleaning. This will help insure furniture and Aluminum umbrellas are properly maintained. As a result of proper cleaning, this will prevent frame painted finish in a salt environment from blistering and/or oxidizing. To maintain an attractive paint finish, apply a coat of car wax (use as instructed) every 4-6 months. We will repair or refinish the frame in the original color and style, or in a similar style if color or model has been discontinued.

FRAMES

5 years for residential use and one year for commercial use. If the cast or extruded aluminum frame fails structurally (i.e., broken frame or welds) under normal use or conditions and that has received regular care and maintenance, we will at our option, replace or repair the frame in the original color and style, if available, or in a similar style if color or model has been discontinued. This is a limited warranty. Proof of purchase along with photos of the damaged goods will be required showing customers original sales order with name of original purchaser, date with product model numbers and descriptions.

FABRICS

Landgrave warrants outdoor fabrics on cushions and slings, which have been properly maintained and cleaned per manufacturer's instructions, against mildew for one (1) year when put to ordinary residential use. This Warranty, however does not cover damage caused by water freeze, and the following are not material or manufacturing defects and are not covered by this Warranty: Color variation, natural fiber graining, yarn slubs and textural changes such as "naps" (the raised, fuzzy surface on fabrics such as velvet) that will show as visible hue or color changes after use (crushing and shading); slight and gradual wear including "pilling" (the formation of small balls of fuzz on the fabric surface) due to the friction of normal use; and stretching and wrinkling due to normal use since these characteristics are inherent to material unique nature. Loss of resiliency should not be confused with the slight and expected softening and flattening of the polyester fiber, feather and down mixture, and foam components that occur as a result of normal use and aging. Such flattening and softening is not a material or manufacturing defect, and is not covered by this Warranty. This warranty does not cover normal care and cleaning, damage from misuse or abuse, improper installation, or costs associated with replacement of the fabric, including labor and installation. Preventing mildew and mold grow on dirt, pollen and other organic matter; its accomplished by simple routine cleanings. Please check our maintenance and care section in our website. Any failures in stitching, zippers, sling rails, cording, buttons, cushion foam or other areas of workmanship will be warranted for one year. The fabric will not be warranted if deterioration, discoloration, fading, etc. is due to chemicals, cleaning products, sun lotions et al, use in commercial settings, extreme heat or sunlight.

PROCEDURES

Warranty claims must be made in writing through the Landgrave authorized dealer from whom the furniture was purchased. To exercise your rights under this Warranty, please retain your dated receipt or proof of purchase indicating item style and fabric as you will need to submit such dated receipt or proof of purchase when making a claim.

UMBRELLAS

If an umbrella or umbrella base fails structurally within one (1) year from the date of purchase, we will at our option, repair or replace the umbrella or umbrella base, in the original color and style, if available, or in a similar color and style if the original has been discontinued.

MATERIALS USED

For finishing: Akzo Nobel Polyurethane Powder Coating adapted for electrostatic application.

For frames: Aluminum.

Woven fiber: Rehau High Density Polyethylene With UV Stabiliser and Colour Masterbatch.

Sunbrella: 100% Acrylic Fiber.



MEXICO

Landgrave LLC

R.M Clemencia Borja Taboada 522 Primer Piso Juriquilla,
Queretaro. 76230.
ventas@landgrave.com.mx

NICARAGUA

Landgrave Manufacturing LLC

KM 95.6 Carretera Leon - Chinandega Contiguo al deposito de la
Cerveceria Leon, Nicaragua 21000
ventas@landgrave.com.mx

www.landgrave.com